



PROJECT CHECKPOINT 1

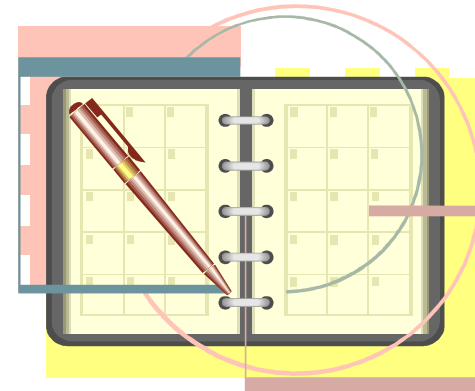
Graph-based Adaptive Diagnosis

Yajie (Jessica) Wang

Advisor: Professor Amit Sahai

Class: CS 194

PLANNED SCHEDULE

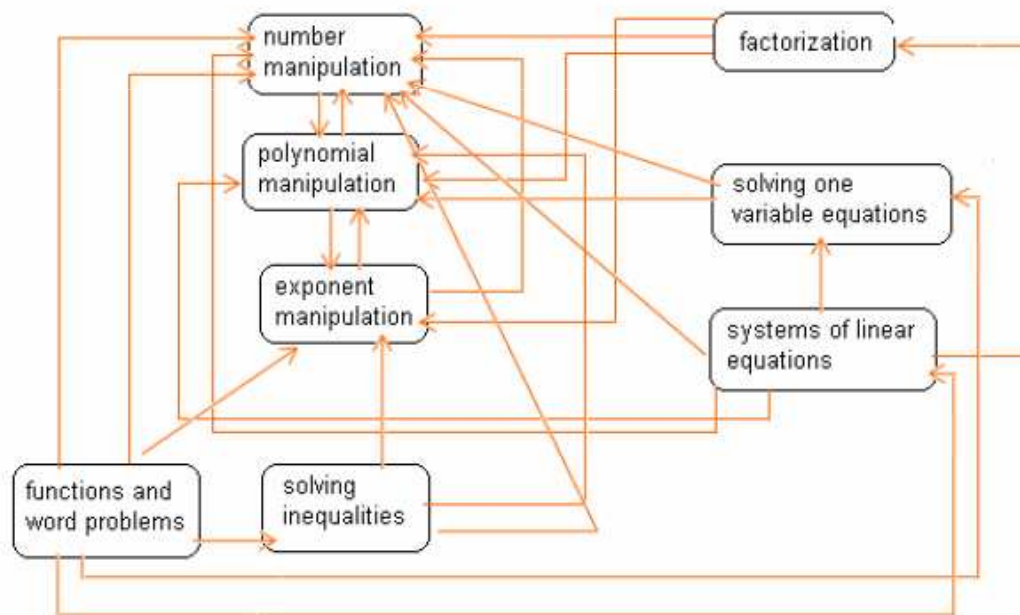


- Create initial directed graph
- Create database of problems
- Create a working algorithm
- Apply for approval for human testing



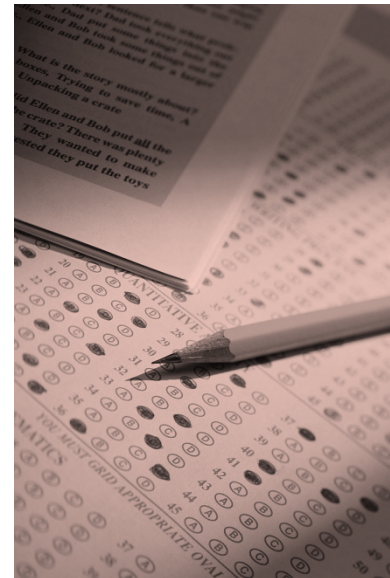
ACCOMPLISHMENTS

- Created 2 directed graphs
 - Specific topics under factorization
 - General topics



ACCOMPLISHMENTS

- Created problem set (minimum of 20 problems per topic)
- Created graph library
- 3 traversal functions
 - Linear traversal, depth first, breadth first
- 2 evaluation algorithms
- Turned in HS-1 Form to OPRS



DIFFICULTIES/SURPRISES



- Working out bugs in code
- Evaluation algorithm- how much to deduct?
- Trouble with OPRS
 - Initial goal: apply for exemption
 - Obstacle: required another form
 - Current situation:
 - Office is backed up in paperwork, evaluation in February
- After obtaining approval from UCLA, we must also obtain approval from LAUSD



NEXT STEPS

- Refine test algorithms based on observations and testing
- Compare test efficiency
- Refine directed graph
- Apply for approval from LAUSD
- Conduct actual research study

